



Erratum to: Evaluation of Adhesive Characteristics of Mixed Cross Laminated Timber (CLT) Using Yellow Poplar and Softwood Structural Lumber

Keon-Ho KIM^{1,†} · Hyun-Mi LEE² · Min LEE²

ERRATUM

In the published article “Evaluation of Adhesive Characteristics of Mixed Cross Laminated Timber (CLT) Using Yellow Poplar and Softwood Structural Lumber. Journal of the Korean Wood Science and Technology 52(1): 58-69. <https://doi.org/10.5658/WOOD.2024.52.1.58>,” popular should be modified to poplar in title, abstract and keywords [1]. The editorial office would like to correct it.

1. Article title

Popular → Poplar, Lumber → Lumber.

2. Abstract

line 4, line 10: Popular → Poplar.

3. Keywords

yellow popular → yellow poplar.

4. Page 59 right paragraph, line 4 and line 11 :

popler → poplar.

REFERENCES

Kim, K.H., Lee, H.M., Lee, M. 2024. Evaluation of adhesive characteristics of mixed cross laminated timber (CLT) using yellow poplar and softwood structural lumber. Journal of the Korean Wood Science and Technology 52: 58-69.

¹ Wood Industry Division, Forest Products and Industry Department, National Institute of Forest Science, Seoul 02455, Korea

² Wood Engineering Division, Forest Products and Industry Department, National Institute of Forest Science, Seoul 02455, Korea

[†] Corresponding author: Keon-Ho KIM (e-mail: keon@korea.kr, <https://orcid.org/0000-0001-6423-164X>)

© Copyright 2024 The Korean Society of Wood Science & Technology. This is an Open-Access article distributed under the terms of the Creative Commons Attribution Non-Commercial License (<http://creativecommons.org/licenses/by-nc/4.0/>) which permits unrestricted non-commercial use, distribution, and reproduction in any medium, provided the original work is properly cited.



Evaluation of Adhesive Characteristics of Mixed Cross Laminated Timber (CLT) Using Yellow Poplar and Softwood Structural Lumber

Keon-Ho KIM^{1,†} · Hyun-Mi LEE² · Min LEE²

ABSTRACT

To evaluate the adhesive characteristics of mixed cross-laminated timber (CLT) using domestic softwoods structural lumber proposed by KS F 3020 and yellow poplar, penetration depth of adhesive and thickness of bonding line were analyzed based on the results of boiling water soaking delamination. 3 Types of adhesives and 2 types of major layer were divided into a 5 ply CLT using yellow poplar as minor layer. The bonding performance of the mixed CLT as structural members was evaluated based on the KS F 2081. The thickness of bonding line between layers of the mixed CLT was measured with a scanning electron microscope, and the adhesive penetration depth in the layer members was measured with an optical microscope. As a result of boiling water soaking delamination test of mixed CLT, the CLT specimens using PRF and PUR adhesives met the requirements of KS F 2081. It was verified that the penetration path of the adhesive in the layers was mainly through the tracheid cell in the case of Japanese larch and Korean red pine layers, and through the vessel and radial tissue in yellow poplar layers. The penetration depth of the adhesive was the highest for the PRF adhesive under the same pressing time conditions, and the thickness of the bonding line was in inverse proportion to the penetration depth in the case of the PUR adhesive.

Keywords: mixed cross-laminated timber (CLT), adhesive characteristic, yellow poplar, phenol resorcinol formaldehyde (PRF), polyurethane (PUR)

1. INTRODUCTION

With climate change becoming a growing concern, the Intergovernmental Panel on Climate Change (IPCC, 2014) reported that direct emissions from the building sector accounted for 6.4% of global greenhouse gas emissions in 2010. The most commonly used building

materials in construction are concrete and steel, which emit large amounts of carbon in their production (Li *et al.*, 2022). Wood, on the other hand, has a carbon storage effect when used as a building material by fixing the carbon it absorbs as it grows (Singh *et al.*, 2022). Owing to the carbon storage effect of wood, it is gaining global attention as a building material to counter climate change.

Date Received July 27, 2023; Date Revised October 5, 2023; Date Accepted December 5, 2023; Published January 25, 2024

¹ Wood Industry Division, Forest Products and Industry Department, National Institute of Forest Science, Seoul 02455, Korea

² Wood Engineering Division, Forest Products and Industry Department, National Institute of Forest Science, Seoul 02455, Korea

[†] Corresponding author: Keon-Ho KIM (e-mail: keon@korea.kr, <https://orcid.org/0000-0001-6423-164X>)

© Copyright 2024 The Korean Society of Wood Science & Technology. This is an Open-Access article distributed under the terms of the Creative Commons Attribution Non-Commercial License (<http://creativecommons.org/licenses/by-nc/4.0/>) which permits unrestricted non-commercial use, distribution, and reproduction in any medium, provided the original work is properly cited.

The Korean translation of this article can be found at the following address. <https://doi.org/10.5658/wood.korean>

In Korea, wood has long been widely used as an eco-friendly building material for Korean traditional building. Depending on the diameter and shape of the logs, lumber is produced and used as a material for a variety of wooden structure. Timber with large diameter have traditionally been milled and used for structural materials such as posts and rafters. However, timbers with small and medium diameter were mostly shredded and used for pulp or wood lumber, with little use as structural materials. Since the 1900s, manufacturing technological developments have led to the development of engineered wood using small and medium timbers, which have been used as structural laminated materials. Currently, engineered wood is used as an eco-friendly material in both construction and non-construction sectors. Representative engineered woods include structural glued laminated timber (GLT) and cross laminated timber (CLT), which have the advantage of being dimensionally stable and easy to process, allowing them to be manufactured in a variety of shapes and sizes. Therefore, not only the physical properties of CLT and design values for utilization as a building material have been studied, but also the manufacturing of hybrid CLT with composite applications of various materials (Choi *et al.*, 2020, 2021; Fujimoto *et al.*, 2021; Gong *et al.*, 2021; Jung *et al.*, 2020; Lee *et al.*, 2022; Song and Kim, 2023; Trisatya *et al.*, 2023). In particular, CLT, a building structure, has high compressive and bending strengths and has accelerated the high-rise development of wooden buildings based on performance studies such as CLT joints developed mainly in Europe and North America (Ahn *et al.*, 2021; Lee *et al.*, 2022).

The largest amount of forest stock in Korea is reported to be coniferous forests, followed by broadleaf forests and mixed forests, and softwood is mainly used for structural materials, according to KS F 3020 (Korean Standards Association, 2018; Korea Forest Service, 2023). Hardwood is mostly used for bioenergy rather than structural materials, depending on their growth

characteristics and cellular organization, and research on high-value-added and long-term utilization of broad-leaved materials has increased in recent years in consideration of the carbon storage effect. Yellow poplar (*Liriodendron tulipifera* L.) is a hardwood, but as a fast-growing tree, its usability as a structural material has been continuously studied since the 1990s in the U.S. In Korea, research has been conducted on the manufacture of mixed CLT by combining it with other tree species in consideration of the growth characteristics of yellow poplar (Galih *et al.*, 2020; Park *et al.*, 2020; Song and Kim, 2022; Yang *et al.*, 2021).

The main adhesives used to manufacture GLT and CLT are water-resistant solvent phenolic resins and polyurethane resins, all of which are cold-setting resins. Phenolic adhesives have been used for structural applications, but with the increasing social concern for environmental and human health friendliness, adhesives with low formaldehyde emissions have been preferred. Developed for productivity and high bonding performance, one-component polyurethane adhesive is a polymeric polyisocyanurate adhesive that easily reacts with hydroxyl groups in wood and has excellent water resistance, so it is already widely used in Europe to manufacture GLT and CLT (Park, 2014). The bonding performance of CLT depends on various variables, such as the adhesion degree of the adhesive to the surface of the layer, the cohesion of the adhesive itself, the penetration depth of the adhesive into the layer, and the environmental conditions. The penetration of adhesive into wood varies depending on tree species, type of adhesive, pressure, pressure time, temperature, moisture content, adhesive moisture content, etc. (Li *et al.*, 2021; River *et al.*, 1991; Rowell, 2012). In hardwoods, the thin cell walls of vessels and earlywoods facilitate the penetration of adhesives, but wood fibers and latewoods hinder bonding performance. Therefore, research to understand the penetration pathway of adhesives is also being continuously studied, and microscopic analysis such as scan-

ning electron microscopy is typical. Jakes *et al.* (2019) utilized X-ray computed tomography to understand the exact process of infiltration. The bonding performance of CLT is evaluated by delamination rate, shear strength, and neck wave rate, and the international standard for CLT, ISO 16696-1:2019, provides performance measurement methods and quality standards for adhesives based on ISO 20152-1:2010.

In this study, mixed CLTs were manufactured using different tree species (Japanese larch, Korean red pine, and yellow poplar) to evaluate the adhesive performance, and the penetration depth of adhesive and bonding line thickness were measured using a stereomicroscope and scanning electron microscope to analyze the interrelationship between adhesive performance and adhesive penetration characteristics.

2. MATERIALS and METHODS

2.1. Materials

2.1.1. Layer materials for cross laminated timber manufacturing

Layer materials were categorized according to the type of mixed CLT. Japanese larch mixed CLT is made of Japanese larch [*Larix kaempferi* (Lamb.) Carrière] as the outer and middle layers and yellow poplar (*Liriodendron tulipera* L.) as the inner layer. Korean red pine mixed CLT uses Korean red pine (*Pinus densiflora* Siebold & Zucc.) as the outer and middle layers and yellow poplar as the inner layer. Both Japanese larch and Korean red pine layer materials were sourced from trees over 40 years old in Gyeonggi-do and Gangwon-do and purchased from the Yeosu Wood Distribution Center in Gyeonggi-do. The yellow poplar layer material was 27-year-old wood grown in the Eocheon Test Forest of the National Academy of Forestry Sciences (Hwaseong City) and Suwon. The average specific gravity and moisture content of Japanese larch used were 0.54% and 10.50%, while

those of Korean red pine were 0.42% and 11.20%, and those of yellow poplar were 0.51% and 11.50%. The dimensions of the layers were 100 (b) × 500 (l) × 25 (h) mm.

2.1.2. Adhesives

To investigate the adhesive characteristics of Japanese larch/yellow poplar and Korean red pine/yellow poplar mixed CLTs, adhesive specimens were prepared for each adhesive. The first adhesive was a one-component polyurethane adhesive (OTTOCOLL G10), commonly used in Europe and known as a fast-setting and eco-friendly adhesive. This adhesive is primarily used in automated CLT production facilities. However, adhesives that are exposed to outside air and moisture will cure, which can lead to problems such as clogged spray nozzles due to curing if not used consistently (Song and Kim, 2022). Therefore, polyurethane adhesives with different curing times and adhesive characteristics, as shown in Table 1, were applied. The second adhesive was a phenolic resorcinol adhesive (PRX350BT/PR-1HSE, Aica Kogyo, Nagoya, Japan), typically applied to structural aggregates and known for its durability and water resistance. However, the curing time of phenolic resorcinol adhesive is longer than other adhesives, which is a factor that reduces the productivity of CLT manufacturing. The third adhesive was a water-based polymeric isocyanurate adhesive (AUX-500/AUH-8, Aica Kogyo, Aichi, Japan), classified as an eco-friendly adhesive, not containing formaldehyde, and mainly used for furniture. It also has the advantage of low application volume due to its excellent adhesion.

2.2. Mixed cross laminated timber manufacturing and experimental methods

2.2.1. Mixed cross laminated timber manufacturing method

To examine the adhesive characteristics of mixed

Table 1. Nomenclature of mixed CLT specimens according to layout and adhesives

Specimens	Adhesive	Species of lamina		Pressing time (hour)
		Major layer	Minor layer	
PNLY4	Phenol-resorcinol	Japanese larch	Yellow poplar	4
WILY4	Water based polymer isocyanate	Japanese larch	Yellow poplar	4
PULY1	Polyurethane	Japanese larch	Yellow poplar	1
PULY4				4
PURY1		Korean red pine	Yellow poplar	1
PURY4				4

CLT: cross laminated timber.

CLTs according to the adhesive for CLT lamination, 5-ply CLTs were prepared. To investigate the adhesive penetration characteristics of mixed CLT, mixed CLTs composed of Japanese larch and yellow poplar (LY type) and mixed CLTs composed of Korean red pine and yellow poplar (RY type) were manufactured. The amount of adhesive application was 200 g/m² applied on one side, and the pressure was 1 MPa using a hydraulic press (200 ton capacity, Angeon Hydraulic Machinery, Gimpo, Korea). As for the polyurethane adhesive, due to its tendency to foam when cured, the compression time and constant compression pressure are important. Therefore, CLT with polyurethane adhesive was manufactured by applying 1 hour and 4 hours of pressing time to investigate the effect of adhesive penetration. The composite CLTs were 500 mm wide by 500 mm long by 125 mm thick and cured at room temperature for one week after manufacturing (Fig. 1).

2.3. Boiling water soaking test

The bonding performance standards of CLT vary from country to country, and boiling water soaking delamination is one of the most important performances that determine quality. To investigate the water resistance performance of adhesive-blended CLT, the

water boiling test was conducted according to KS F 2081 Cross Laminated Timber (Korean Standards Association, 2021). The fabricated mixed CLT was re-cut to the dimensions of 100 × 100 × 125 mm thick, as shown in Fig. 1b, and 24 of the manufactured specimens were used. The water boiling test was performed by immersing the specimen in boiling water for 4 hours, then immersing it again in water at room temperature (10°C–25°C) for 1 hour, and then placing it in a constant temperature dryer at 70 ± 3°C to dry to a mass ranging from 100% to 110% of the pre-test mass. The delamination length in the bonding line measured on all four sides of the specimen was limited to 3 mm or more, and cracks in the wood due to drying or warping were excluded from the measurement. The delamination rate was calculated as in Equation (1).

$$\text{Average boiling water soaking delamination (\%)} = \frac{L_D}{L_G} \times 100 \quad (1)$$

L_D : The sum of the delamination lengths in the bonding line on the four edge faces of the CLT.

L_G : The sum of the bonding line lengths on the four edge faces of the CLT.

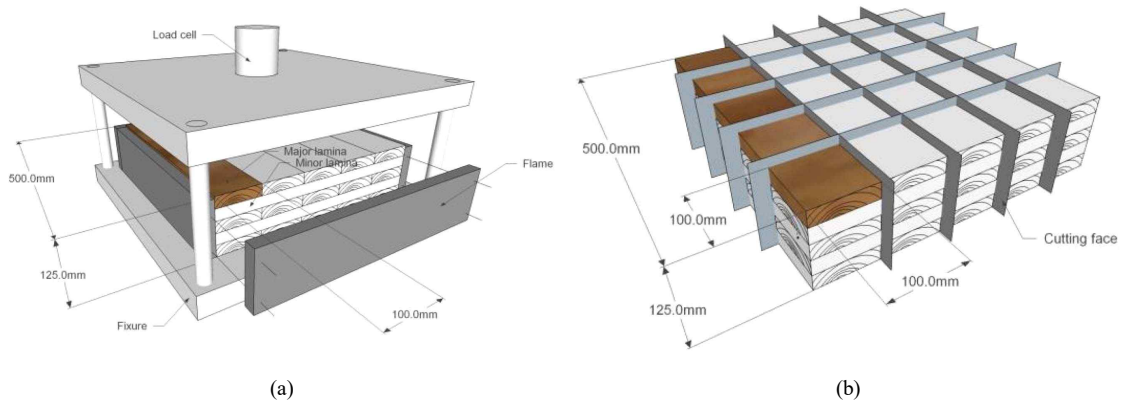


Fig. 1. Manufacturing mixed CLT (a) and specimens for delamination test (b). CLT: cross laminated timber.

The bonding performance standard for CLT is 10% or less of the boiling water soaking delamination rate according to KS F 2081. Based on the results of the water boiling test, manufacturing conditions were selected to improve performance.

2.4. Microscopic analysis of glue line

2.4.1. Measuring bonding line thickness

To measure the bonding line thickness of the mixed CLT, samples were taken from the specimens for microscopic observation, as shown in Table 2. The bonding line specimen was made centered on the bonding line of the major and minor axis layer materials. To examine the adhesive penetration process of each cross-section of the layering material, the transverse and radial or tangential cross-sections of the layering material were made. The fabricated specimens were cleanly cut with a silding microtome to identify the cross-section, coated with gold, and observed under a scanning electron microscope (SEMCOX EM-30, COXEM, 20 kV). The bonding line thickness was measured 10 times per specimen, and the average value was calculated.

2.4.2. Measuring penetration depths of adhesive

The specimen for microscopic observation was taken from the center of the fabricated mixed CLT. A cross-section of the bonding line according to the adhesive type of the mixed CLT was cut and stained with a 1% safranin solution and observed. To examine the penetration depth of adhesive, the length of the adhesive penetrated into the cell on the cross-section of the laminae with the bonding line was measured 20 times as shown in Fig. 2 using the Image j program, and the average value was calculated.







3. RESULTS and DISCUSSION

3.1. Comparison of bonding performance of mixed cross laminated timber

3.1.1. Delamination rates of mixed cross laminated timber with different adhesive types

For use as a structural CLT, the boiling water delamination of mixed CLT was evaluated by adhesive type and tree species according to KS 2081. Alamsyah *et al.* (2007) reported that there are differences in bonding performance depending on the density and wettability of the laminate species and the contact angle of the adhesive. Therefore, depending on the species, the adhesive

Table 2. Classification of microscopic observation section on types of mixed CLT

Type of mixed CLT	Layer		Observation section
	Major	Minor	
PNLY	Cross	Radial or tangential	
WILY			
PULY			
PURY			
PULY	Radial or tangential	Cross	
PURY			

CLT: cross laminated timber.

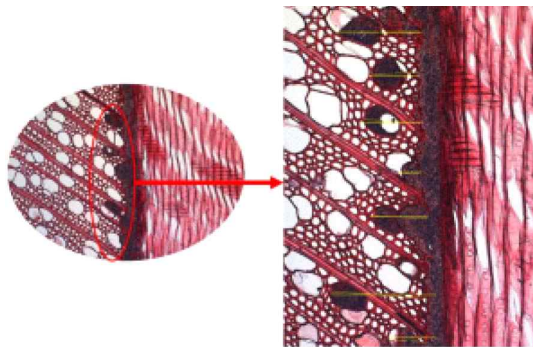


Fig. 2. Measurement of penetration of adhesive into cells in cross section of lamina (safranin-O staining).

characteristics are also very important for its penetration into the laminate. The delamination performance of LY-type mixed CLT bonded by applying the same oppressive pressure time (4 hours) for each adhesive type is

shown in Fig. 3. Japanese larch-yellow poplar mixed CLT bonded with phenolic resorcinol adhesive (PN) and polyurethane adhesive (PU) met the quality standard of boiling water soaking delamination rate of CLT set by KS F 2081 with less than 10%, but the specimen bonded with water-based polymer isocyanurate adhesive did not meet the quality standard. Therefore, the waterborne polymeric isocyanurate adhesive used in this experiment is not considered suitable for the fabrication of mixed CLTs.

In addition, based on water boiling test results, PU adhesive showed better adhesion performance in Korean red pine-yellow poplar mixed CLT than Japanese larch-yellow poplar mixed CLT. The PU adhesive did not inhibit the deformation of the Japanese larch laminate during the drying process after immersion but inhibited the deformation of the Korean red pine laminate with a

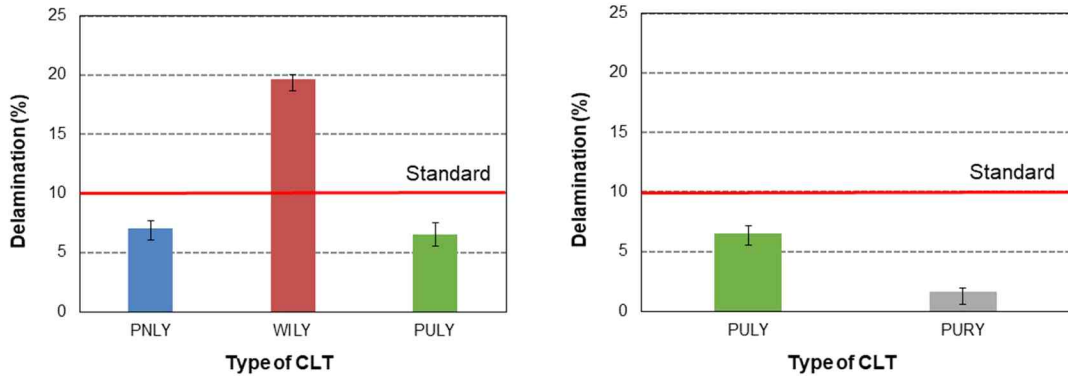


Fig. 3. Delamination of mixed CLT after boiling water soaking. CLT: cross laminated timber.

relatively low specific gravity. Therefore, the PU adhesive used in this experiment is determined to be more suitable than other adhesives for bonding Korean red pine and yellow poplar.

3.2. Microscopic comparison of bonding lines

3.2.1. Comparison of bonding line thicknesses

The adhesive penetrates into the cell lumen through the oppressive pressure of the layer material. The penetration depth of the adhesive is one of the most important factors in bonding performance. The bonding mechanism of the adhesive is not only the chemical

adhesion of the adhesive to the wood surface, but also the physical adhesion of the adhesive into the cell. To determine the penetration depth of the adhesive when Japanese larch and Korean red pine, which were soft-wood structural materials, were used as the outer layer and yellow poplar was used as the inner layer, a microscopic analysis of the layer by section was conducted based on the bonding line. Fig. 4 is an image of the bonding line thickness observed by scanning electron microscopy. The adhesive penetrated into the tracheids of Japanese larch and Korean red pine and into the vessels of yellow poplar.

PNLY and WILY specimens have a thinner bonding line thickness compared to PULY specimens. In addition,

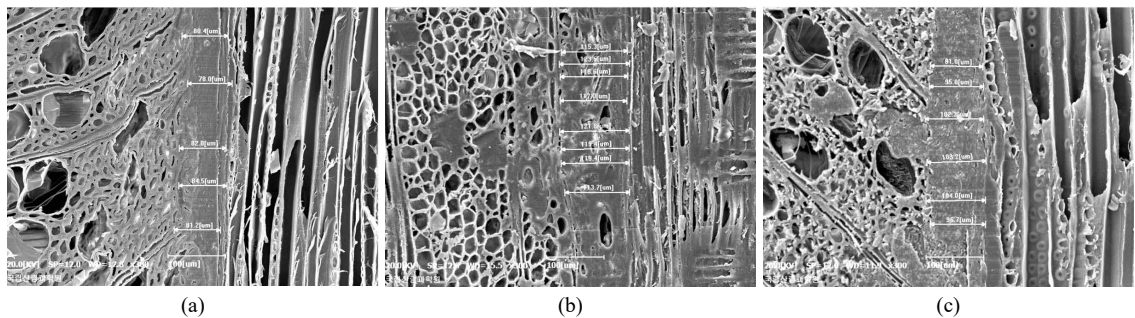


Fig. 4. Typical image for measuring thickness of bonding line by SEM ($\times 300$). (a) PULY4, (b) PNLy4, (c) WILY4. SEM: scanning electron microscope.

the bonding line thickness of the composite CLT with PU adhesive did not show any significant difference with the pressure time. When used as an adhesive for the manufacture of CLT, the thickness of the bonding line is specified in BS ISO 16696-1:2019 Timber Structures as not more than 0.2 mm for the bonding line of CLT between plates and 0.3 mm for the longitudinal direction of the layer material. Comparing the bonding line thickness of mixed CLT by adhesive, PU adhesive was found to be thicker than other adhesives, but it met all EN standards (Table 3).

3.2.2. Comparison of penetration depths of adhesive

Optical microscopy was used to examine the penetra-

Table 3. Thickness of bonding line on types of mixed CLT

Specimens	Thickness of bonding line (mm)	Requirement of ISO 16696-1
PNLY4	0.1	Less than 0.2
WILY4	0.1	
PULY4	0.2	
PURY4	0.1	

CLT: cross laminated timber.

tion pathway of the adhesive into the layer materials of the mixed CLT. PN and WI adhesives were identified as dark and reddish in color, making them distinguishable from cells in the layer materials. For the PU adhesive,

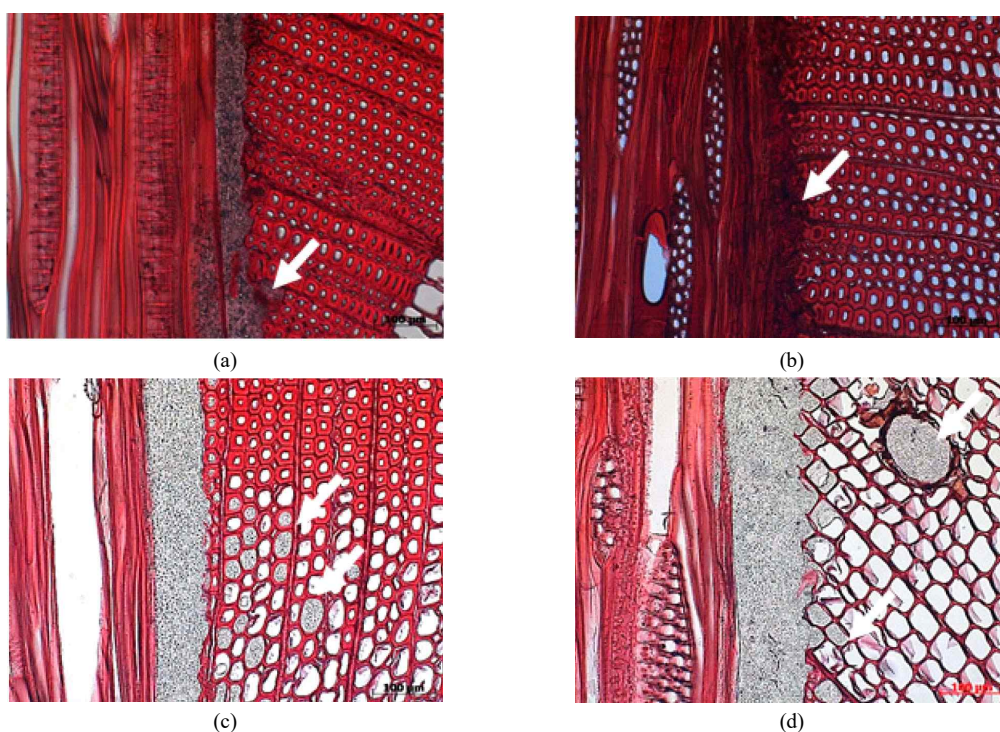


Fig. 5. Micrographs of CLT bonding lines according to adhesive (safranin O staining, bar = 100 μ m). (a) WILY4, (b) PNL4, (c) PULY1, (d) PURY1. Radial or tangential section of the minor layer on the left and cross section of the major layer on the right. Arrows indicate glue penetration into the cell lumen. CLT: cross laminated timber.

the adhesive was identified as shown by the white arrows in Fig. 5(c) and (d). In Japanese larch and Korean red pine, glue was found inside the tracheids. In yellow poplar, the penetration pathway of the adhesive into cells is considered to be through the blood vessels around the radial tissue. Kim and Park (2021) reported that the adhesive penetration process in wood was confirmed by using a specially treated adhesive to penetrate into the radial tissues and tracheids of softwood.

During microscopic observation, it was difficult to distinguish between WI and PN adhesives when the cell lumen was small, as the degree of staining of the cell affected the color of the adhesive. Various studies have been conducted to investigate the penetration process using confocal micrographs, SEM, and fluorescence

microscopy (Frihart, 2005; Kamke and Lee, 2007; Singh *et al.*, 2008; Fig. 6).

Table 4 shows the adhesive penetration depth of each composite CLT. Comparing the penetration depth of each type of adhesive in the yellow poplar layer of the mixed CLT bonding line, PN and PU adhesives were measured to penetrate the most, and the PU adhesive penetrated the RY specimen more than the LY specimen. As for the pressure time, the 1-hour specimen was penetrated deeper than the 4-hour specimen. The PU adhesive with fast curing speeds is difficult to penetrate into the substrate after an adequate curing reaction time. As for the test specimen using the WI adhesive, the penetration depth from the bonding line was similar to that of PU adhesive with the same pressure time, but it did

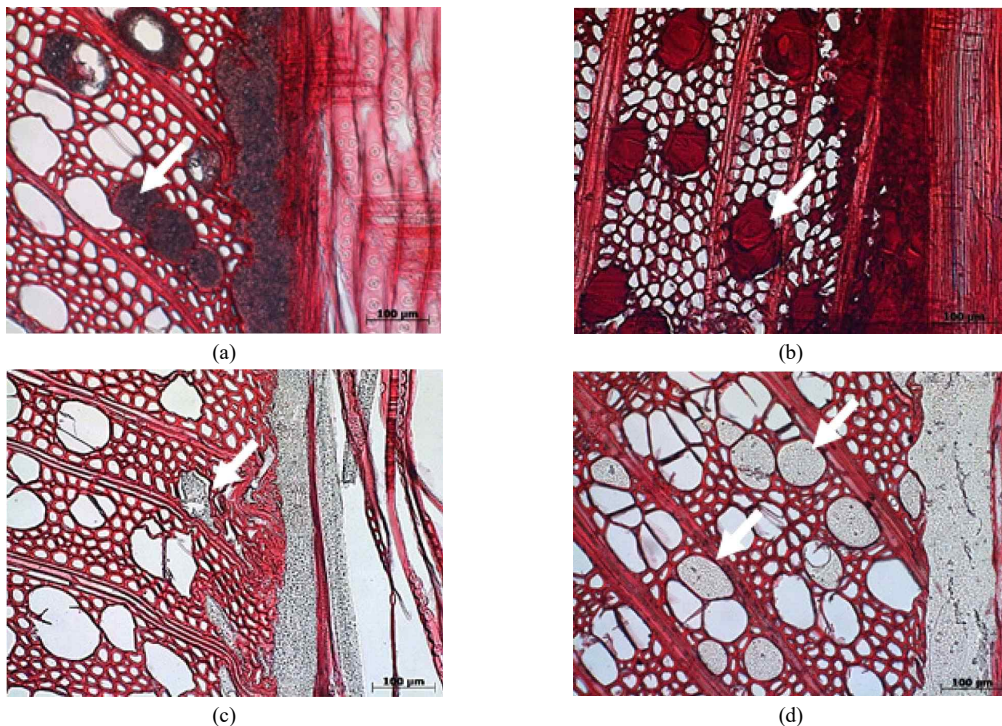


Fig. 6. Micrographs of CLT bonding lines according to adhesive (safranin O staining, bar = 100 μm). (a) WILY4, (b) PNLY4, (c) PULY1, (d) PURY1. Cross section of the minor layer on the left and radial or tangential section of major layer on the right. Arrows indicate glue penetration into the cell lumen. CLT: cross laminated timber.

Table 4. Penetration depth of adhesive (μm) on types of mixed CLT

Type of mixed CLT	Min.	Max.	Ave. (SD)
PNLY4	76.46	1,283.73	654.04 (0.52)
WILY4	42.04	270.90	113.72 (0.55)
PULY4	32.08	157.61	68.50 (0.51)
PURY4	46.16	230.12	117.00 (0.49)
PULY1	35.99	1,431.96	668.57 (0.73)
PURY1	31.76	340.21	146.48 (0.53)

CLT: cross laminated timber.

not meet the boiling water soaking delamination criteria, indicating that the water resistance of the adhesive and the strength of the adhesive itself were important factors.

4. CONCLUSIONS

Depending on the type of adhesive used in the manufacturing process of mixed CLT, the boiling water soaking delamination of the adhesive was evaluated, and the penetration depth of the adhesive into the layer material and the thickness of the adhesive layer were compared. The results of comparing the penetration depth of the adhesive according to the type of layer material with an optical microscope and the thickness of the bonding line with a scanning microscope are as follows.

1. The results of the water boiling test of mixed CLT met the quality performance standards for phenolic

adhesive and polyurethane adhesive, and all mixed CLT specimens with polyurethane adhesive according to tree species met the quality performance standards.

2. The penetration pathway of the adhesive in the layer material was found in the tracheids of Japanese larch and Korean red pine, while yellow poplar laminates showed penetration into the vessels through the radial tissues.
3. The penetration depth of the adhesive was measured to be the largest for the phenolic adhesive under the same pressure time condition, while the bonding line thickness was inversely related to the penetration depth for the polyurethane adhesive.

CONFLICT of INTEREST

No potential conflict of interest relevant to this article was reported.

ACKNOWLEDGMENT

This research was supported by a Research Project (FP0200-2021-01-2023) through the National Institute of Forest Science (NIFoS), Korea.

REFERENCES

- Ahn, K.S., Pang, S.J., Oh, J.K. 2021. Prediction of withdrawal resistance of single screw on Korean wood products. *Journal of the Korean Wood Science and Technology* 49(1): 93-102.
- Alamsyah, E.M., Nan, L.C., Yamada, M., Taki, K., Yoshida, H. 2007. Bondability of tropical fast-growing tree species I: Indonesian wood species. *Journal of Wood Science* 53(1): 40-46.
- Choi, G.W., Yang, S.M., Lee, H.J., Kim, J.H., Choi, K.H., Kang, S.G. 2020. A study on the block shear strength according to the layer composition of and

- adhesive type of ply-lam CLT. *Journal of the Korean Wood Science and Technology* 48(6): 791-806.
- Choi, G.W., Yang, S.M., Lee, H.J., Kim, J.H., Choi, K.H., Kang, S.G. 2021. Evaluation of flexural performance according to the plywood bonding method of ply-lam CLT. *Journal of the Korean Wood Science and Technology* 49(2): 107-121.
- Fujimoto, Y., Tanaka, H., Morita, H., Kang, S.G. 2021. Development of ply-lam composed of Japanese cypress laminae and Korean larch plywood. *Journal of the Korean Wood Science and Technology* 49(1): 57-66.
- Galih, N.M., Yang, S.M., Yu, S.M., Kang, S.G. 2020. Study on the mechanical properties of tropical hybrid cross laminated timber using bamboo laminated board as core layer. *Journal of the Korean Wood Science and Technology* 48(2): 245-252.
- Gong, D.M., Shin, M.G., Lee, S.H., Byeon, H.S., Park, H.M. 2021. Dynamic property of cross-laminated woods made with temperate seven species. *Journal of the Korean Wood Science and Technology* 49(5): 504-513.
- Intergovernmental Panel on Climate Change [IPCC]. 2014. *Climate Change 2014: Mitigation of Climate Change*. In: *Contribution of Working Group III to the Fifth Assessment Report of the Intergovernmental Panel on Climate Change*, Ed. by Edenhofer, O., Pichs-Madruga, R., Sokona, Y., Farahani, E., Kadner, S., Seyboth, K., Adler, A., Baum, I., Brunner, S., Eickemeier, P., Kriemann, B., Savolainen, J., Schlömer, S., von Stechow, C., Zwickel, T., and Minx, J.C. Cambridge University Press, Cambridge, UK.
- Jakes, J.E., Frihart, C.R., Hunt, C.G., Yelle, D.J., Plaza, N.Z., Lorenz, L., Grigsby, W., Ching, D.J., Kamke, F., Gleber, S.C., Vogt, S., Xiao, X. 2019. X-ray methods to observe and quantify adhesive penetration into wood. *Journal of Materials Science* 54(1): 705-718.
- Jung, H., Song, Y., Hong, S. 2020. Effect of glass fiber-reinforced connection on the horizontal shear strength of CLT walls. *Journal of the Korean Wood Science and Technology* 48(5): 685-695.
- Kamke, F.A., Lee, J.N. 2007. Adhesive penetration in wood: A review. *Wood and Fiber Science* 39(2): 205-220.
- Kim, M., Park, B.D. 2021. A method of measuring wood failure percentage of wood specimens bonded with melamine-urea-formaldehyde resins using image analysis. *Journal of the Korean Wood Science and Technology* 49(3): 274-282.
- Korea Forest Service. 2023. *Statistical Yearbook of Forestry*. Korea Forest Service, Daejeon, Korea. p. 36. (in Korean)
- Korean Standards Association. 2018. *Softwood Structural Lumber*. KS F 3020. Korean Standards Association, Seoul, Korea.
- Korean Standards Association. 2021. *Cross Laminated Timber*. KS F 2081. Korean Standards Association, Seoul, Korea.
- Lee, I.H., Kim, K., Shim, K. 2022. Evaluation of bearing strength of self-tapping screws according to the grain direction of domestic *Pinus densiflora*. *Journal of the Korean Wood Science and Technology* 50(1): 1-11.
- Li, M., Zhang, S., Gong, Y., Tian, Z., Ren, H. 2021. Gluing techniques on bond performance and mechanical properties of cross-laminated timber (CLT) made from *Larix kaempferi*. *Polymers* 13(5): 733.
- Li, T., Yang, C., Tantikhajorngosol, P., Sema, T., Tontiwachwuthikul, P. 2022. Studies on advanced configurations of post-combustion CO₂ capture process applied to cement plant flue gases. *Carbon Capture Science & Technology* 4: 100064.
- Park, C.Y. 2014. Effect of PPG, MDI, 2-HEMA and butyl acrylate content on the properties of polyurethane adhesive. *Elastomers and Composites* 49(3): 245-252.

- Park, H.M., Gong, D.M., Shin, M.G., Byeon, H.S. 2020. Bending creep properties of cross-laminated wood panels made with tropical hardwood and domestic temperate wood. *Journal of the Korean Wood Science and Technology* 48(5): 608-617.
- Rowell, R.M. 2012. *Handbook of Wood Chemistry and Wood Composites*. In: *Wood Adhesion and Adhesives*. 2nd ed, Ed. by Rowell, R.M. CRC Press, Boca Raton FL, USA.
- Singh, A., Dawson, B., Rickard, C., Bond, J., Singh, A. 2008. Light, confocal and scanning electron microscopy of wood-adhesive interface. *Microscopy and Analysis* 22(3): 5-8.
- Singh, T., Arpanaei, A., Elustondo, D., Wang, Y., Stocchero, A., West, T.A.P., Fu, Q. 2022. Emerging technologies for the development of wood products towards extended carbon storage and CO₂ capture. *Carbon Capture Science & Technology* 4: 100057.
- Song, D., Kim, K. 2022. Influence of manufacturing environment on delamination of mixed cross laminated timber using polyurethane adhesive. *Journal of the Korean Wood Science and Technology* 50(3): 167-178.
- Song, D., Kim, K. 2023. Influence of composition of layer layout on bending and compression strength performance of larix cross-laminated timber (CLT). *Journal of the Korean Wood Science and Technology* 51(4): 239-252.
- Trisatya, D.R., Santoso, A., Abdurrachman, A., Prastiwi, D.A. 2023. Performance of six-layered cross laminated timber of fast-growing species glued with tannin resorcinol formaldehyde. *Journal of the Korean Wood Science and Technology* 51(2): 81-97.
- Yang, S.M., Lee, H.H., Kang, S.G. 2021. Research trends in hybrid cross-laminated timber (CLT) to enhance the rolling shear strength of CLT. *Journal of the Korean Wood Science and Technology* 49(4): 336-359.