



Experimental Investigation of the Sound Absorption Capability of Wood Pellets as an Eco-Friendly Material

Eun-Suk JANG^{1,2,†}

ABSTRACT

In this study, I used wood pellets as an eco-friendly sound-absorbing material. The aim of the research was to analyze the effect of the filling height of wood pellets on sound absorption. This was done using two types of wood pellets of different lengths (A group: 1.5–3 cm, B group: less than 1.5 cm). With increasing filling height of the wood pellets, the optimum sound absorption shifted towards a lower frequency. The group B wood pellets had better sound absorption capacity than the group A ones. The optimum sound absorption coefficient of group A filled to a height of 7 cm was 0.722 at 864 Hz. On the other hand, that of group B filled to a height of 7 cm was 0.764 at 862 Hz, 5.82% higher than that of group A. While wood pellets are used as an eco-friendly fuel, the results of this study suggest the possibility of using wood pellets as an eco-friendly sound-absorbing material.

Keywords: wood pellets, sound absorption coefficient, eco-friendly sound-absorbing material

1. INTRODUCTION

Wood fosters sustainable production and is a representative renewable eco-environmental resource (Ahn *et al.*, 2021; Ermeýdan *et al.*, 2014; Ghani and Lee, 2021; Hadi *et al.*, 2022; Han and Lee, 2021; Park *et al.*, 2020a; Park *et al.*, 2020b). The Intergovernmental Panel on Climate Change (IPCC) recognizes wood as a representative carbon-neutral material. They also strongly encourage the use of wood as an essential means of building a carbon-neutral society (Brunet-Navarro *et al.*, 2018).

In line with these recommendations, the French

government mandated that more than 50% of new public buildings must be constructed of wood in 2022 (Walter, 2020). The popularity of wood products and constructions are also increasing in Korea (Iswanto *et al.*, 2020; Kim and Kim, 2020; Yang *et al.*, 2020). According to a survey of 300 people conducted by the Korea Timber Newspaper in 2019, when asked, “What type of house do you want to build in the future?”, wood was the most common response (47.9%), followed by reinforced concrete (18.6%), other material (13.2%), loess (11.4%), and brick (9%) (Kim, 2019).

Architects should consider sound control when designing a building. Noise reduction is becoming increasingly

Date Received December 25, 2021, Date Revised February 17, 2022, Date Accepted March 10, 2022

¹ Research Institute of Human Ecology, College of Human Ecology, Jeonbuk National University, Jeonju 54896, Korea

² R&D Center, Sambo Scientific Co. Ltd, Seoul 07258, Korea

[†] Corresponding author: Eun-Suk JANG (e-mail: esjang@sambosc.com, <https://orcid.org/0000-0001-5995-8617>)

© Copyright 2022 The Korean Society of Wood Science & Technology. This is an Open-Access article distributed under the terms of the Creative Commons Attribution Non-Commercial License (<http://creativecommons.org/licenses/by-nc/4.0/>) which permits unrestricted non-commercial use, distribution, and reproduction in any medium, provided the original work is properly cited.

vital as urbanization advances and people spend more time indoors (Jang *et al.*, 2018b; Kang *et al.*, 2019b). Accordingly, the sound-absorbing material market is also increasing.

The use of sustainable and eco-friendly wood as a sound absorber is noteworthy. Wood can be used as a resonant sound absorber by creating a hole in the panel and applying a backspace. The resonance frequency and sound absorption peak are impacted by the thickness of the perforated plate, the depth and size of the voids, and the porosity (Song *et al.*, 2016). The sound absorption capability also varies depending on the shape of the perforation (Lee *et al.*, 2014).

Wood is a natural, porous material (Jang *et al.*, 2018a; Jang *et al.*, 2019), the transverse plane of which can act as a sound absorber (Jang and Kang, 2021a; Jang and Kang, 2022; Kang *et al.*, 2019a; Kang *et al.*, 2018). According to the results of previous studies, the transverse plane of hardwoods has better sound absorption than that of softwoods, and the sound absorption capability is excellent in diffuse-porous wood with fewer tyloses on vessels (Jang and Kang, 2021b; Jang and Kang, 2021c). In addition, it has been reported that wood by-products, such as bark particles (Kang *et al.*, 2019b), sawdust (Boubel *et al.*, 2021), and leaves (Jung *et al.*, 2021), also have high sound absorption capability.

Wood pellets are generally made from by-products of wood products, are biomass-based energy carriers, and are renewable energy sources (Pradhan *et al.*, 2018). Wood pellets have several advantages, including having more than twice the heat of combustion than the original wood. In addition, wood pellets have a straightforward structure and arrangement that can automatically supply fuel to boilers, all while not generating toxic gas during combustion (Zaichenko and Shterenberg, 2017).

This study focused on wood pellets as an eco-friendly sound absorber. Wood pellets are formed by crushing wood into small pieces and then compressing and molding the pieces at a uniform size (Lee and Kim, 2020).

The size of commercially available wood pellets is approximately 5–7 mm in diameter and 20–30 mm in length (Kim *et al.*, 2015).

These granular materials have a sound-absorbing effect due to the hollow spaces between the granules, the rough granule surface, or pores of the granules themselves (Arenas and Crocker, 2010). Wood pellets satisfy all three of these conditions.

Therefore, this study investigated the sound absorption capacity of wood pellets. The results of this study will contribute to the utilization of wood resources for climate change response by suggesting that wood pellets be used as a sound-absorber as well as an energy resource.

2. MATERIALS AND METHODS

2.1. Sample preparation

Fig. 1 shows the preparation of wood pellets. The wood pellets used in this study were supplied by UJU Camping (Daejeon, Korea) and are made of New Zealand radiata pine (*Pinus radiata*).

The diameter of the wood pellets was constant at 0.5 cm, but the length varied from a minimum of 0.5 cm to a maximum of 3 cm. This study classified wood pellets into two groups based on length (A group: 1.5–3 cm length and B group: less than 1.5 cm length).

Their moisture content (MC) was measured based on the original weight according to KS F 2199 (Korean Standards Association, 2016). 100 g of wood pellets was placed in an oven and dried at 105°C. After around 3 days, their weight was 93.19 g, and the MC of the wood pellets was 6.81%.

2.2. Scanning electron microscopy (SEM) analysis

This study analyzed the side and transverse plane surfaces of wood pellets after they were dried in a laboratory oven at 40°C for 5 hours. The pellets then

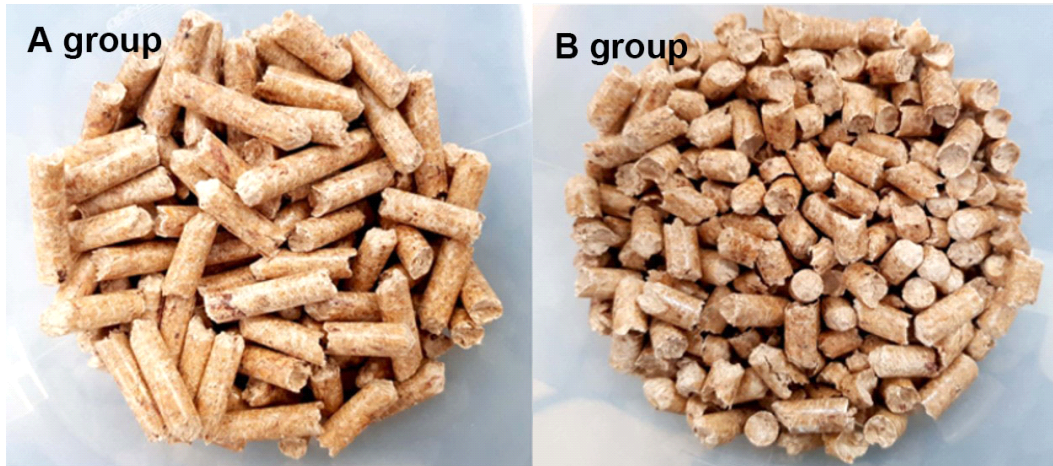


Fig. 1. Sample preparation of wood pellets by length (A group: 1.5–3 cm, B group: less than 1.5 cm).

were coated with gold in a vacuum using an ion coating machine (SCM, Emcrafts, Gwangju, Korea). All samples were observed at 500 magnification in high-vacuum mode (7.5×10^{-5} mmHg) using SEM (Genesis-1000, Emcrafts). The side and transverse planes were observed at three locations each.

2.3. Analysis of the sound absorption coefficient

Fig. 2 shows a schematic diagram of the impedance tube. A large impedance tube system with a 9.9 cm diameter (type 4206, Brüel & Kjaer, Nærum, Denmark) was employed for measuring the sound absorption coefficient. Though an impedance tube typically is used in a horizontal position (Jang *et al.*, 2018b), the present tube was mounted vertically to investigate the sound absorption capability of pure wood pellets without a frame.

The power amplifier (type 42176C, Brüel & Kjaer) produced a plane wave sound source in a 50 to 1,600 Hz frequency range. The sound pressure was measured with two microphones to yield a sound transfer function.

As shown in Fig. 2, the wood pellets were packed

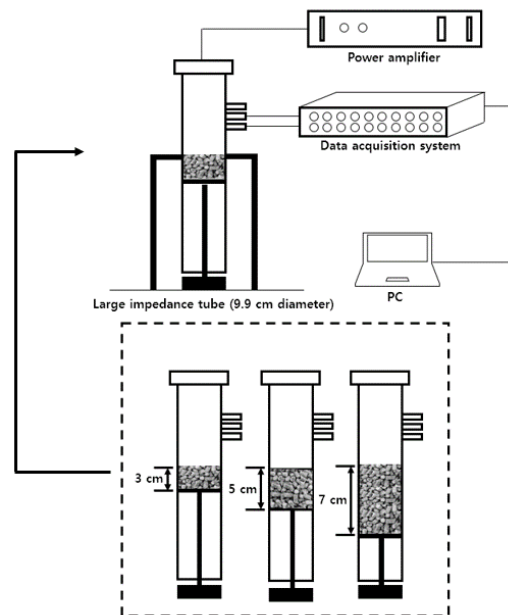


Fig. 2. Schematic diagram of impedance tubes.

into large impedance tubes at fill heights of 3 cm, 5 cm, and 7 cm. The apparent density of the wood pellets contained in the large impedance tube was maintained at 0.65 g/cm^3 for Group A and 0.67 g/cm^3 for Group B.

The wood pellet's arrangement direction was random during sound absorption testing.

3. RESULTS and DISCUSSION

3.1. Scanning electron microscopy (SEM) images

Fig. 3 shows the SEM images of the wood pellet side and transverse planes. The side plane surface of the wood pellet was smooth, and few pores were observed due to the compression during fabrication.

On the other hand, the transverse plane of the wood pellet had a rougher surface than the side plane. A rough surface is a significant factor that influences improvement of the sound absorption capability (Chung *et al.*, 2017; Duan *et al.*, 2020; Tomyangkul *et al.*, 2016).

3.2. Results of the sound absorption coefficient

Fig. 4 shows the sound absorption coefficient curves

of wood pellets by packing height. The maximum sound absorption coefficients of wood pellets filled to a height of 3 cm were 0.311 at 1,600 Hz for the A group and 0.409 at 1,600 Hz for the B group, a 31.5% difference. The maximum sound absorption coefficients of the wood pellets filled to a height of 5 cm were 0.670 at 1,288 Hz for the A group and 0.723 at 1,234 Hz for the B group, with a value 7.91% higher in the B group. The maximum sound absorption coefficients of the wood pellets filled to a height of 7 cm were 0.722 at 864 Hz for the A group and 0.764 at 862 Hz for the B group, with a 5.82% higher result in the B group than the A group.

Overall, as the filling thickness of the wood pellets increased, the sound absorption peak shifted in the low-frequency direction. This is a typical characteristic of granular sound-absorbing materials (Borrell *et al.*, 2020). In addition, the B group had better sound absorption than the A group. The reason for this is that the shorter is the length of the wood pellet, the more complicated is the tortuosity of the void volume between pellets. A

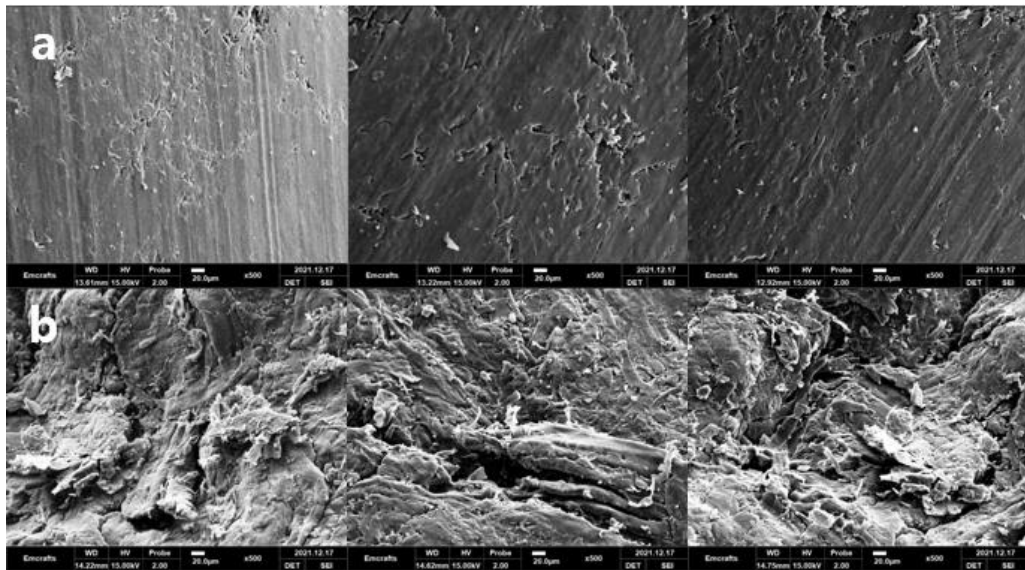


Fig. 3. SEM images of wood pellets. (a) side and (b) transverse planes.

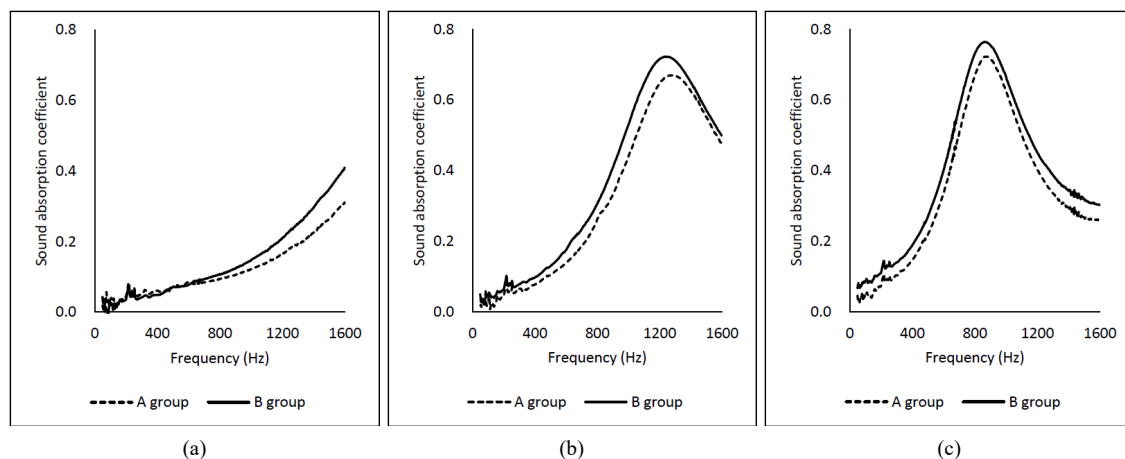


Fig. 4. Sound absorption coefficient curves of wood pellets depending on thickness. (a) 3 cm, (b) 5 cm, and (c) 7 cm.

complex tortuous path can efficiently dissipate incident sound waves (Cao *et al.*, 2018).

Also, the wood pellets of the B group had a shorter length than those of the A group, resulting in higher exposure frequency of the rough transverse section. A rough surface affects the sound absorption performance (Chung *et al.*, 2017; Duan *et al.*, 2020; Tomyangkul *et al.*, 2016). Conclusively, filling to a large height, the complex paths between wood pellets, and the rough surface of the transverse section affect the sound absorption capability.

Wood pellets were initially designed to be utilized as energy resources. However, this study furthers the use of wood pellets based on their sound absorption effects. This study proposes the use of wood pellets as sound-absorbing mats covered with non-woven fabrics. Additionally, such materials can be easy to install if they are manufactured on a board by applying adhesive to the wood pellets. However, since the adhesives block the space between the wood pellets, the sound absorption performance is expected to be significantly lowered. In the future, it will be necessary to study the difference between mat-type sound-absorbing materials without the use of adhesives and board-type sound-absorbing mate-

rials coated with adhesives.

4. CONCLUSIONS

This study investigated the sound absorption capability of wood pellets. In sum, as the filling thickness of the wood pellets increased, the sound absorption performance at low frequencies was improved. In addition, short-length wood pellets of sound absorption ability was better than that of long-length wood pellets. This is because the shorter is the length of the wood pellets, the more complex is the tortuosity of the void volume between them. The shorter wood pellets had a higher exposure frequency for the rough transverse plane than did the longer wood pellets, which also increased the sound absorption performance. This study reported for the first time the sound absorption capability of wood pellets. This work will contribute to an increase in wood resource utilization.

CONFLICT of INTEREST

No potential conflict of interest relevant to this article was reported.

ACKNOWLEDGMENT

Not applicable.

REFERENCES

- Ahn, K.S., Pang, S.J., Oh, J.K. 2021. Prediction of withdrawal resistance of single screw on Korean wood products. *Journal of the Korean Wood Science and Technology* 49(1): 93-102.
- Arenas, J.P., Crocker, M.J. 2010. Recent trends in porous sound-absorbing materials. *Sound & Vibration* 44(7): 12-18.
- Borrell, J.M.G., Sanchis, E.J., Alcaraz, J.S., Belda, I.M. 2020. Sustainable sound absorbers from fruit stones waste. *Applied Acoustics* 161: 107174.
- Boubel, A., Garoum, M., Bousshine, S., Bybi, A. 2021. Investigation of loose wood chips and sawdust as alternative sustainable sound absorber materials. *Applied Acoustics* 172: 107639.
- Brunet-Navarro, P., Jochheim, H., Kroiher, F., Muys, B. 2018. Effect of cascade use on the carbon balance of the German and European wood sectors. *Journal of Cleaner Production* 170: 137-146.
- Cao, L., Fu, Q., Si, Y., Ding, B., Yu, J. 2018. Porous materials for sound absorption. *Composites Communications* 10: 25-35.
- Chung, H., Park, Y., Yang, S.Y., Kim, H., Han, Y., Chang, Y.S., Yeo, H. 2017. Effect of heat treatment temperature and time on sound absorption coefficient of *Larix kaempferi* wood. *Journal of Wood Science* 63(6): 575-579.
- Duan, M., Yu, C., Xu, Z., Xin, F., Lu, T.J. 2020. Acoustic impedance regulation of Helmholtz resonators for perfect sound absorption via roughened embedded necks. *Applied Physics Letters* 117(15): 151904.
- Ermeidan, M.A., Cabane, E., Gierlinger, N., Koetz, J., Burgert, I. 2014. Improvement of wood material properties via *in situ* polymerization of styrene into tosylated cell walls. *RSC Adv* 4(25): 12981-12988.
- Ghani, R.S.M., Lee, M.D. 2021. Challenges of wood modification process for plantation eucalyptus: A review of Australian setting. *Journal of the Korean Wood Science and Technology* 49(2): 191-209.
- Hadi, Y.S., Herliyana, E.N., Pari, G., Pari, R., Abdillah, I.B. 2022. Furfurylation effects on discoloration and physical-mechanical properties of wood from tropical plantation forests. *Journal of the Korean Wood Science and Technology* 50(1): 46-58.
- Han, Y., Lee, S.M. 2021. Investigation on the awareness and preference for wood to promote the value of wood: II. Awareness of wood cultural resources. *Journal of the Korean Wood Science and Technology* 49(6): 643-657.
- Iswanto, A.H., Hakim, A.R., Azhar, I., Wirjosentono, B., Prabuningrum, D.S. 2020. The physical, mechanical, and sound absorption properties of sandwich particleboard (SPb). *Journal of the Korean Wood Science and Technology* 48(1): 32-40.
- Jang, E.S., Kang, C.W. 2021a. Delignification effects on Indonesian momala (*Homalium foetidum*) and Korean red toon (*Toona sinensis*) hardwood pore structure and sound absorption capabilities. *Materials* 14(18): 5215.
- Jang, E.S., Kang, C.W. 2021b. The pore structure and sound absorption capabilities of Homalium (*Homalium foetidum*) and Jelutong (*Dyera costulata*). *Wood Science and Technology* 56(1): 323-344.
- Jang, E.S., Kang, C.W. 2021c. Sound absorption characteristics of three species (Binuang, Balsa and Paulownia) of low density hardwood. *Holzforchung* 75(12): 1115-1124.
- Jang, E.S., Kang, C.W. 2022. An experimental study on changes in sound absorption capability of spruce (*Picea sitchensis*), Douglas fir (*Pseudotsuga menziesii*), and larch (*Larix kaempferi*) after microwave treatment. *Journal of Wood Science* 68(1): 1-6.

- Jang, E.S., Kang, C.W., Jang, S.S. 2018a. Comparison of the mercury intrusion porosimetry, capillary flow porometry and gas permeability of eleven species of Korean wood. *Journal of the Korean Wood Science and Technology* 46(6): 681-691.
- Jang, E.S., Kang, C.W., Jang, S.S. 2019. Pore characterization in cross section of yellow poplar (*Liriodendron tulipifera*) wood. *Journal of the Korean Wood Science and Technology* 47(1): 8-20.
- Jang, E.S., Kang, C.W., Kang, H.Y., Jang, S.S. 2018b. Sound absorption property of traditional Korean natural wallpaper (Hanji). *Journal of the Korean Wood Science and Technology* 46(6): 703-712.
- Jung, S.Y., Kong, R.K., Lee, K.S., Byeon, H.S. 2021. Effects of air-dried leaves of evergreen broad-leaved trees on sound absorption property. *Journal of the Korean Wood Science and Technology* 49(5): 482-490.
- Kang, C.W., Jang, E.S., Jang, S.S., Cho, J.I., Kim, N.H. 2019a. Effect of heat treatment on the gas permeability, sound absorption coefficient, and sound transmission loss of *Paulownia tomentosa* wood. *Journal of the Korean Wood Science and Technology* 47(5): 644-654.
- Kang, C.W., Jang, E.S., Jang, S.S., Kang, H.Y., Kang, S.G., Oh, S.C. 2019b. Sound absorption rate and sound transmission loss of wood bark particle. *Journal of the Korean Wood Science and Technology* 47(4): 425-441.
- Kang, C.W., Li, C., Jang, E.S., Jang, S.S., Kang, H.Y. 2018. Changes in sound absorption capability and air permeability of Malas (*Homalium foetidum*) specimens after high temperature heat treatment. *Journal of the Korean Wood Science and Technology* 46(2): 149-154.
- Kim, G.C., Kim, J.H. 2020. Changes in mechanical properties of wood due to 1 year outdoor exposure. *Journal of the Korean Wood Science and Technology* 48(1): 12-21.
- Kim, M. 2019. Conducted a public awareness survey on wood policy and quality. Woodkorea. <https://www.woodkorea.co.kr/news/articleView.html?idxno=31224>
- Kim, S., Yang, I., Han, G.S. 2015. Effect of sawdust moisture content and particle size on the fuel characteristics of wood pellet fabricated with *Quercus mongolica*, *Pinus densiflora* and *Larix kaempferi* sawdust. *Journal of the Korean Wood Science and Technology* 43(6): 757-767.
- Korean Standards Association. 2016. Determination of moisture content of wood. KS F 2199. Korean Standards Association, Seoul, Korea.
- Lee, H.W., Kim, S.B. 2020. Study on the estimation of proper compression ratios for Korean domestic wood species by single pellet press. *Journal of the Korean Wood Science and Technology* 48(4): 450-457.
- Lee, M., Park, S.B., Byeon, H.S., Kim, J.I. 2014. Developing of sound absorption composite boards using carbonized medium density fiberboard. *Journal of the Korean Wood Science and Technology* 42(6): 714-722.
- Park, S., Han, Y., Son, D. 2020a. Flame retardancy of wood products by spreading concentration and impregnation time of flame retardant. *Journal of the Korean Wood Science and Technology* 48(4): 417-430.
- Park, Y., Jeon, W.S., Yoon, S.M., Lee, H.M., Hwang, W.J. 2020b. Evaluation of cell-wall microstructure and anti-swelling effectiveness of heat-treated larch wood. *Journal of the Korean Wood Science and Technology* 48(6): 780-790.
- Pradhan, P., Mahajani, S.M., Arora, A. 2018. Production and utilization of fuel pellets from biomass: A review. *Fuel Processing Technology* 181: 215-232.
- Song, B., Peng, L., Fu, F., Liu, M., Zhang, H. 2016. Experimental and theoretical analysis of sound absorption properties of finely perforated wooden panels. *Materials* 9(11): 942.

- Tomyangkul, S., Pongmuksuwan, P., Harnnarongchai, W., Chaochanchaikul, K. 2016. Enhancing sound absorption properties of open-cell natural rubber foams with treated bagasse and oil palm fibers. *Journal of Reinforced Plastics and Composites* 35(8): 688-697.
- Walter, A. 2020. France requires new public buildings to contain at least 50% wood. <https://archinect.com/news/article/150183480/>
- Yang, S.M., Kwon, J.H., Kim, P.L., Kang, S.G. 2020. Analysis of heat transfer characteristics by material based on closed conditions using acrylic hemispheres (II): Comparison by type of building structural materials. *Journal of the Korean Wood Science and Technology* 48(5): 710-721.
- Zaichenko, V.M., Shterenberg, V.Y. 2017. Torrefaction of wood pellets: New solutions. *Thermal Engineering* 64(10): 729-737.